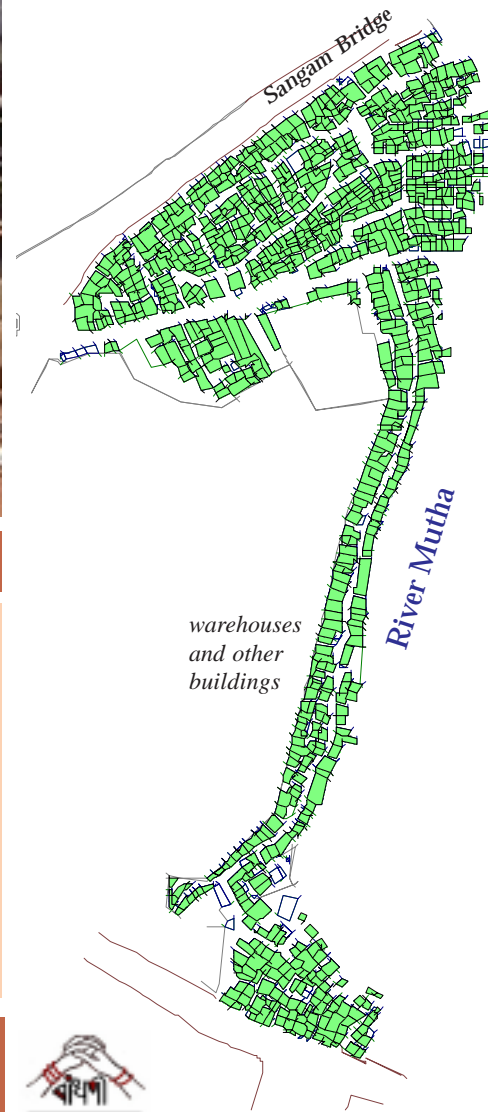


Kamgar Putala: FACTS & FIGURES



LEFT: Digitised Plane Table Map of Kamgar Putala, which is located along the Mutha River in the Shivaji Nagar area of Pune

THE BASICS

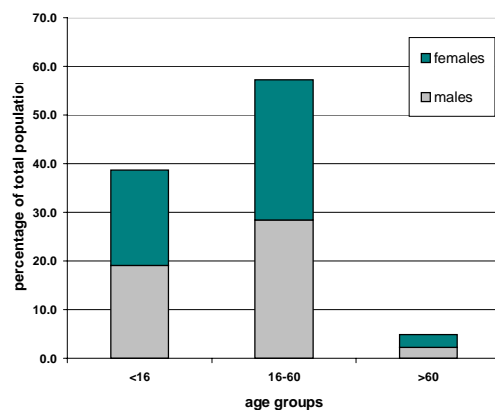
All structures: 948
 Houses surveyed: 810
 (after three rounds, including surveys outside working hours)

Population: 4054
 Male: Female Ratio: 1000:1004

DOCUMENTATION

Ration Card 86%
 Photo ID Card 63%
 Name on Electoral Roll 64%

POPULATION



LEFT: age and sex structure of the population of Kamgar Putala slum

HOUSEHOLDS

Mean household size: 5
 Women-headed households: 24%

HOUSES

pucca 25%
 kutcha 25%
 semi-pucca 50%

individual water connection 41%

electricity 91%
of whom 46% have their own meter

93% of houses are owned by the occupier

RESIDENCE

Average number of years lived:

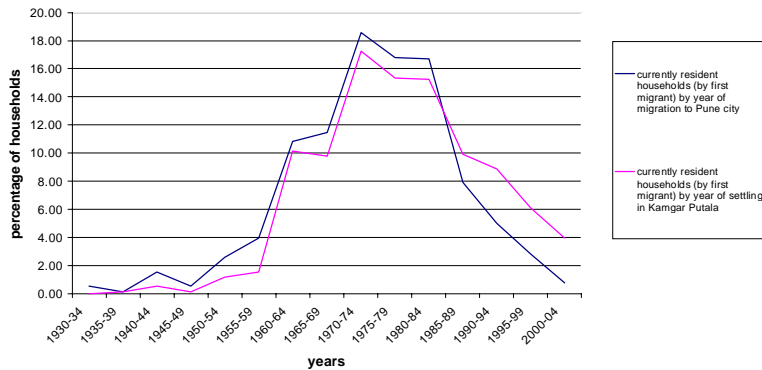
in this slum 23
 in Pune 28



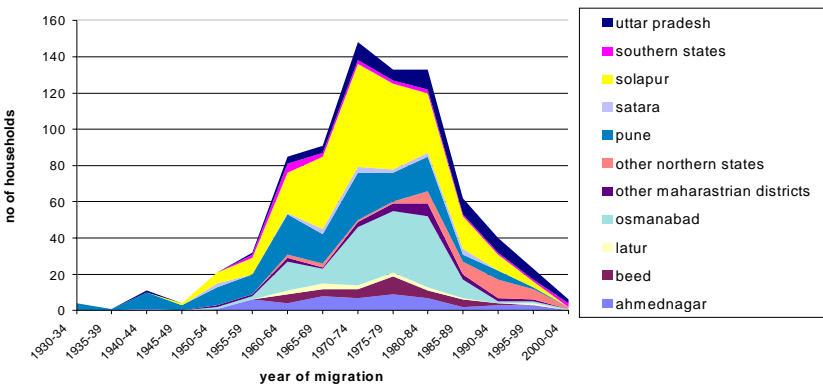
April 2001

KAMGAR PUTALA: MIGRATION

YEAR OF MIGRATION TO PUNE CITY AND YEAR OF SETTLING IN KAMGAR PUTALA SLUM BY MEMBER OF CURRENT HOUSEHOLDS WHO FIRST MIGRATED

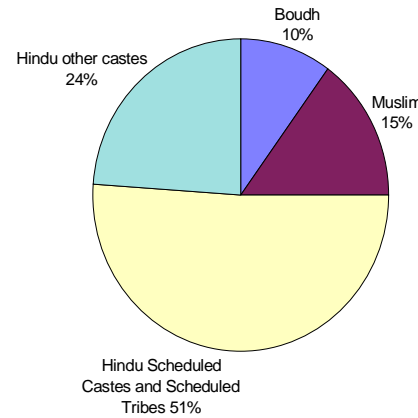


YEAR OF MIGRATION TO PUNE CITY BY NATIVE PLACE BY MEMBER OF CURRENT HOUSEHOLDS WHO FIRST MIGRATED

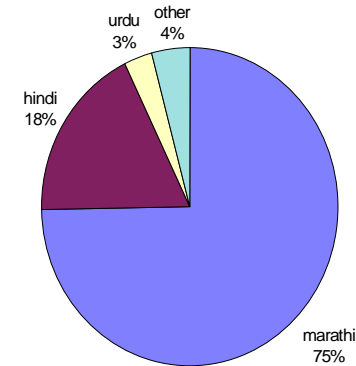


KAMGAR PUTALA: CASTE, RELIGION, LANGUAGE & NATIVE PLACE

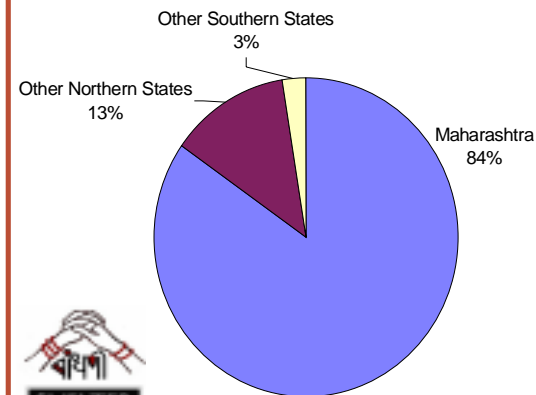
CASTE AND RELIGION AS PERCENTAGE OF ALL HOUSEHOLDS



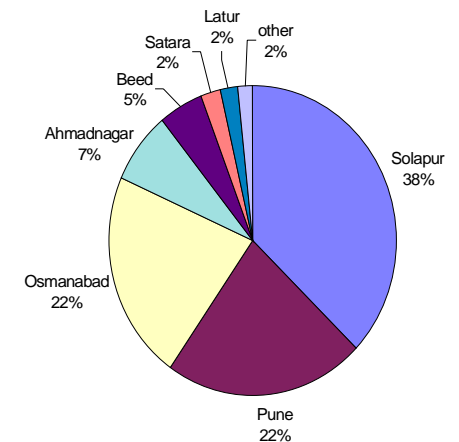
LANGUAGE AS PERCENTAGE OF ALL HOUSEHOLDS



NATIVE PLACE AS PERCENTAGE OF ALL HOUSEHOLDS



NATIVE DISTRICT AS PERCENTAGE OF ALL HOUSEHOLDS WHOSE NATIVE STATE IS MAHARASHTRA

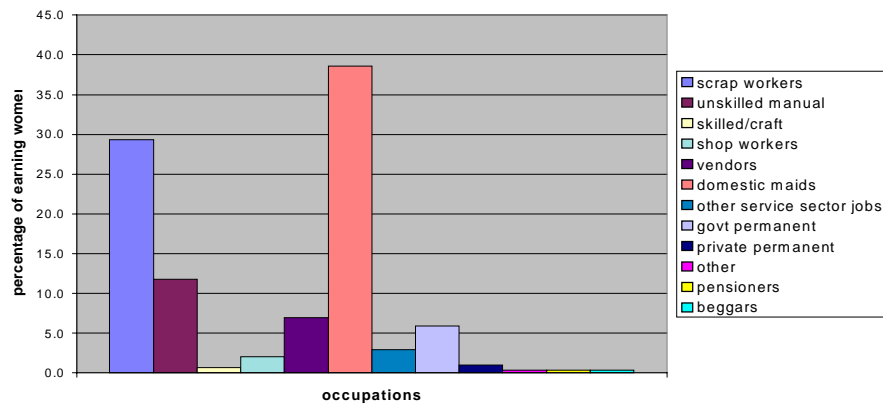


KAMGAR PUTALA: OCCUPATION PROFILES

MALE OCCUPATIONS AS PERCENTAGE OF ALL EARNING MEN

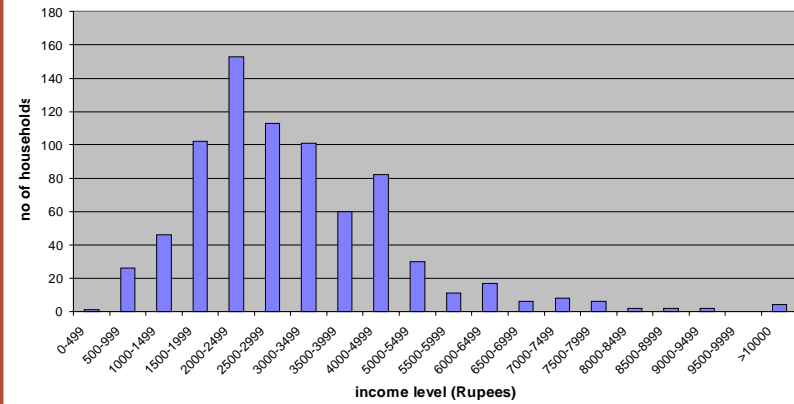


FEMALE OCCUPATIONS AS PERCENTAGE OF ALL EARNING WOMEN



KAMGAR PUTALA: INCOME LEVELS

DISTRIBUTION OF CRUDE HOUSEHOLD MONTHLY INCOME LEVELS



DISTRIBUTION OF CRUDE PER CAPITA MONTHLY INCOME LEVELS

